



# Madrona

2,322

4

2.5

2

# Madrona

LIVING SPACE:  
2,322 SQ. FT.

BEDROOMS: 4

BATHROOMS: 2.5

STORIES: 1

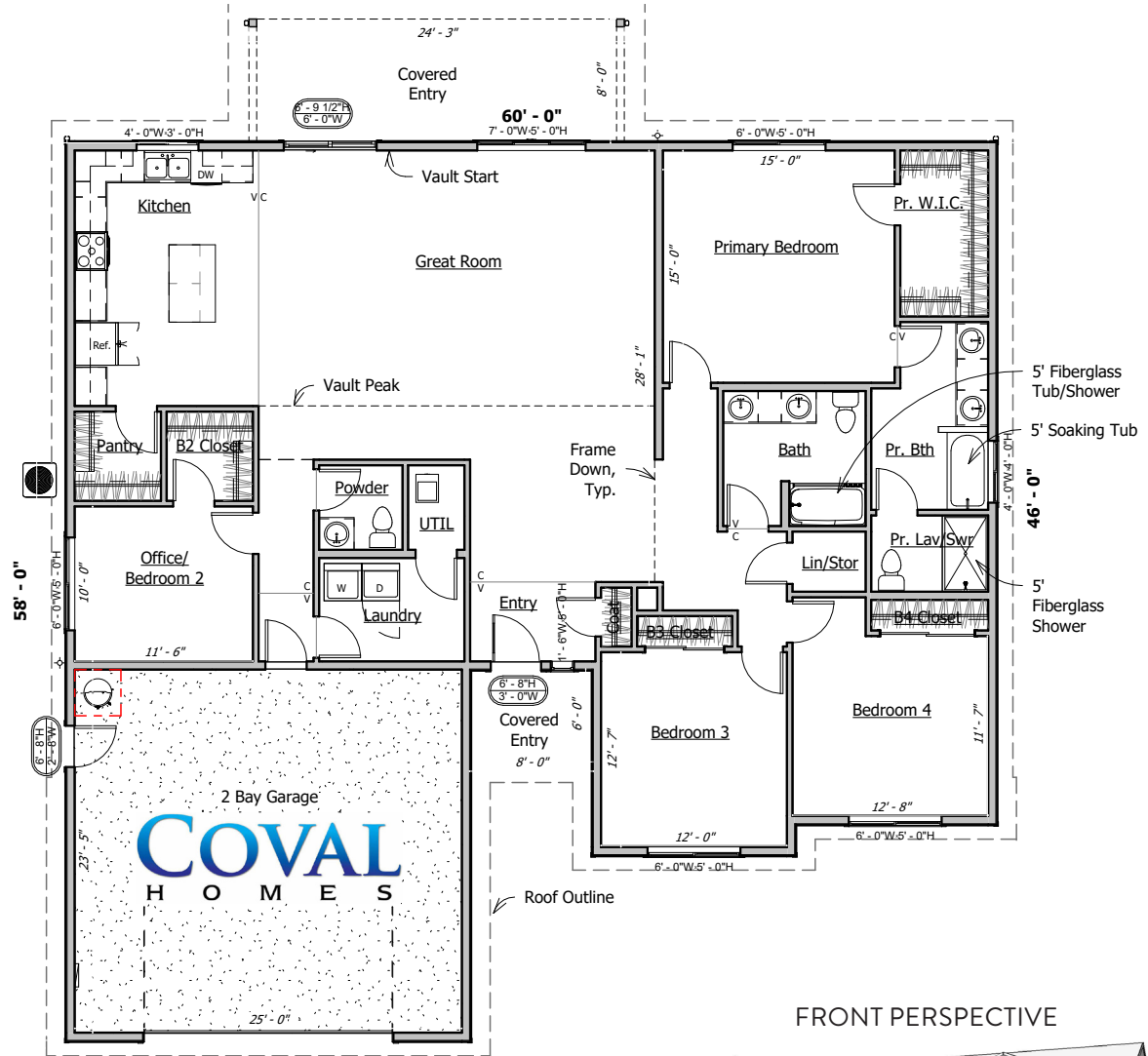
GARAGES: 2

### OPTIONAL FEATURES

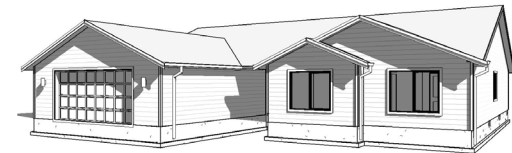
- 9' OR 10' CEILINGS
- SOLID SURFACE COUNTERTOPS
- FARMHOUSE SINKS
- FIREPLACE IN GREAT ROOM
- GABLE SHAKES
- CUSTOM TILE SHOWER
- SOLID WOOD DOORS

BOTH SIDES CONTAIN ARTIST CONCEPTUAL RENDERINGS. WE RESERVE THE RIGHT TO MODIFY PLANS, DRAWINGS, SPECIFICATIONS AND PRICE WITHOUT NOTICE. COVALHL894QD - COPYRIGHT 2025 COVAL HOMES LLC. COPYING, MODIFYING OR DERIVATIVE WORKS OF PLANS CONSTITUTE COPYRIGHT INFRINGEMENT. REVISION: 1/2025

800-693-0357  
COVALHOMES.COM  
INFO@COVALHOMES.COM



FRONT PERSPECTIVE



BACK PERSPECTIVE



**COVAL**  
H O M E S