

COVAL H O M E S



Hetena

↗
1,202

🛏️
3

🛁
2.5

🚗
1

Hetena

LIVING SPACE:
1,202 SQ. FT.

BEDROOMS: 3

BATHROOMS: 2.5

STORIES: 2

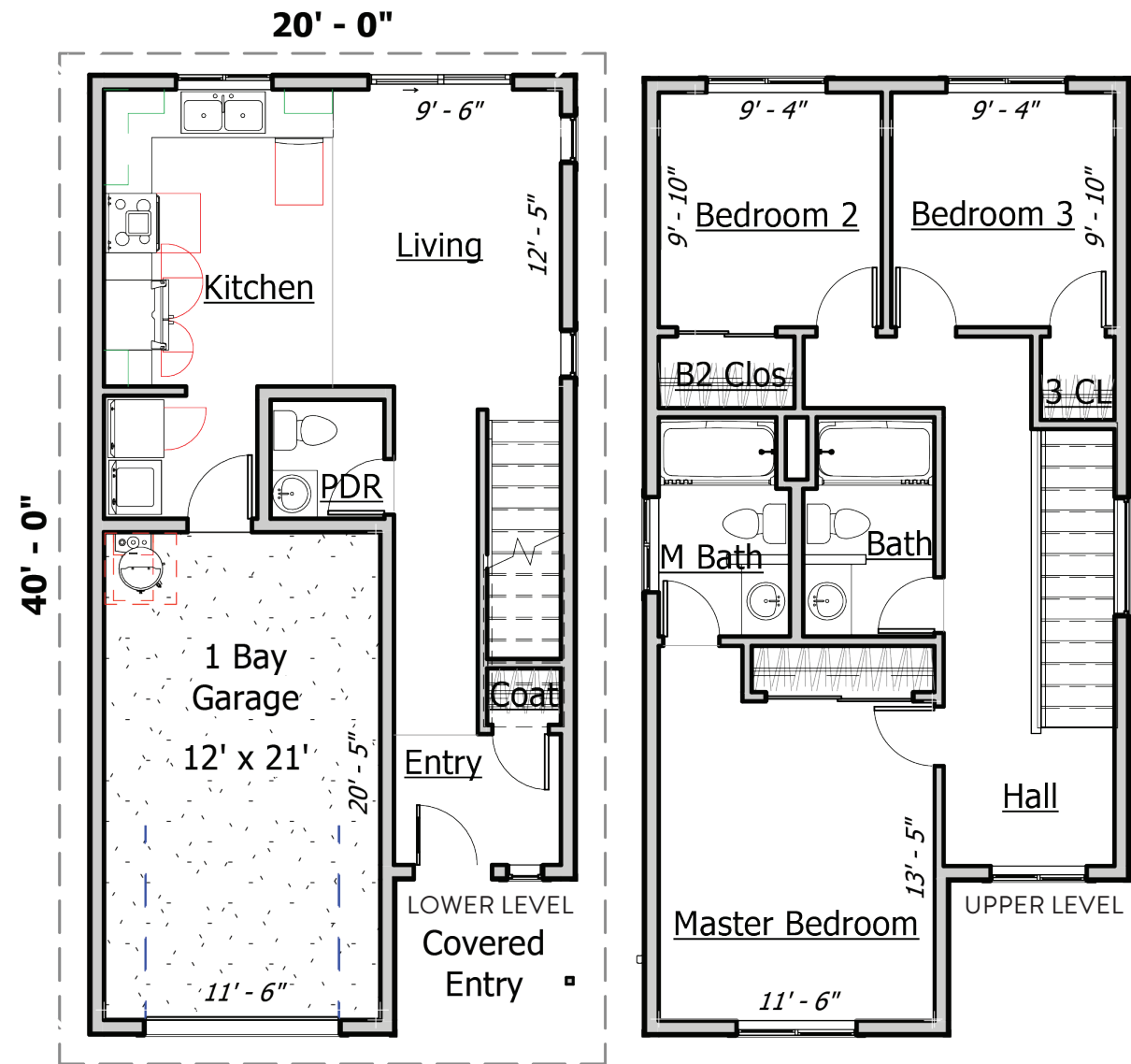
GARAGES: 1

OPTIONAL FEATURES

- 9' CEILINGS
- GRANITE COUNTERTOPS
- FARMHOUSE SINKS
- FIREPLACE IN GREAT ROOM
- GABLE SHAKES
- LUXURY TILE BATH OPT.
- SOLID WOOD DOORS

BOTH SIDES CONTAIN ARTIST CONCEPTUAL RENDERINGS. WE RESERVE THE RIGHT TO MODIFY PLANS, DRAWINGS, SPECIFICATIONS AND PRICE WITHOUT NOTICE. COVALHL894QD - COPYRIGHT 2019 COVAL HOMES LLC. COPYING, MODIFYING OR DERIVATIVE WORKS OF PLANS CONSTITUTE COPYRIGHT INFRINGEMENT. REVISION: 1/2019

800-693-0357
COVALHOMES.COM
INFO@COVALHOMES.COM



ROOF OVERHANG



FRONT PERSPECTIVE



BACK PERSPECTIVE

COVAL
H O M E S