



# Hawthorne



1,782



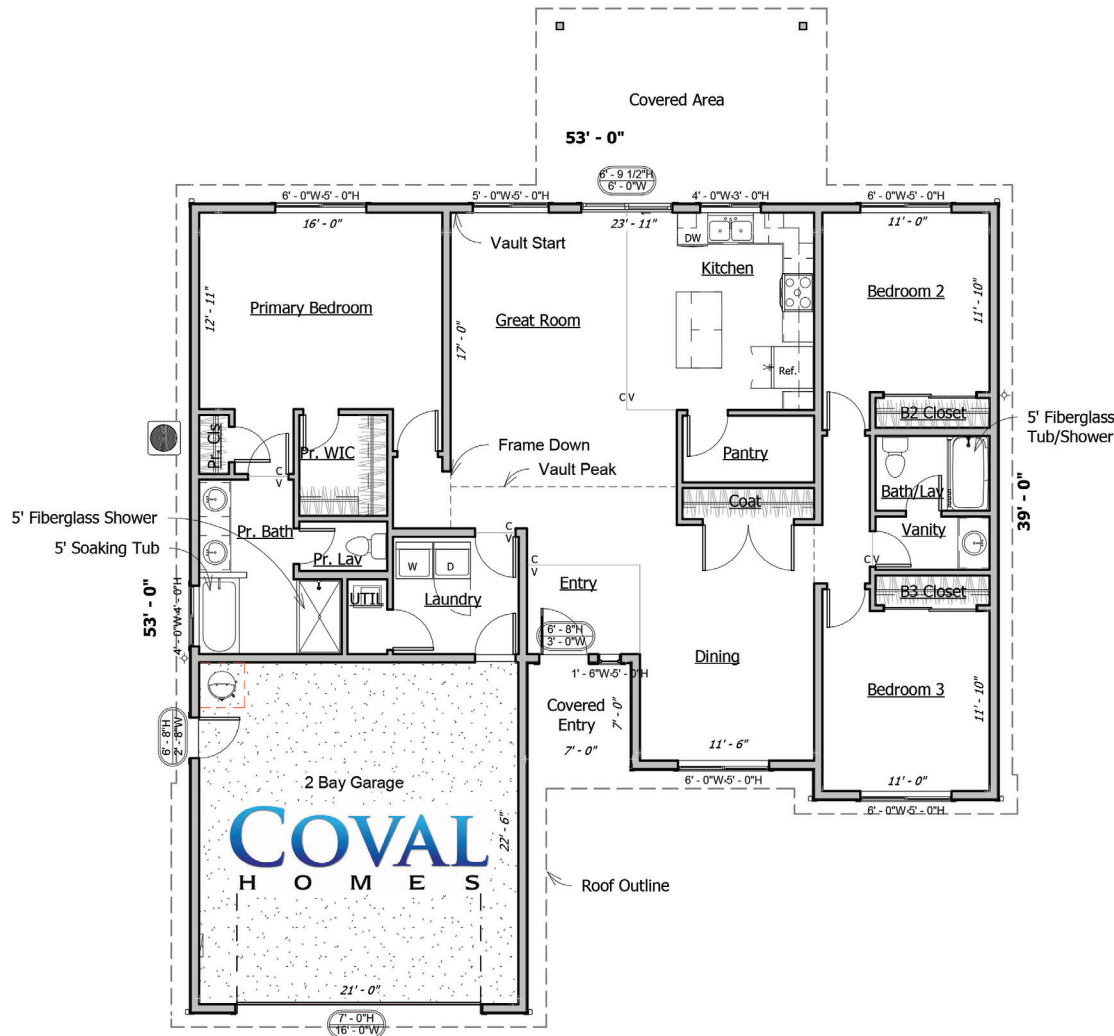
3



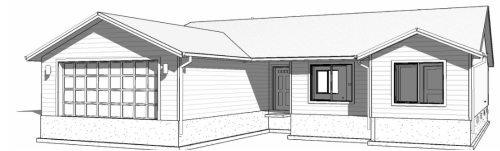
2



2



FRONT PERSPECTIVE



BACK PERSPECTIVE



LIVING SPACE: 1,782 SQ. FT. BEDROOMS: 3 BATHROOMS: 2 STORIES: 1 GARAGES: 2

OPTIONAL FEATURES

- 9' OR 10' CEILINGS
- SOLID SURFACE COUNTERTOPS
- FARMHOUSE SINKS
- FIREPLACE IN GREAT ROOM
- GABLE SHAKES
- CUSTOM TILE SHOWER
- SOLID WOOD DOORS

*Hawthorne*

800-693-0357  
**COVALHOMES.COM**  
**INFO@COVALHOMES.COM**

BOTH SIDES CONTAIN ARTIST CONCEPTUAL RENDERINGS. WE RESERVE THE RIGHT TO MODIFY PLANS, DRAWINGS, SPECIFICATIONS AND PRICE WITHOUT NOTICE. COVALHL894QD - COPYRIGHT 2026 COVAL HOMES LLC. COPYING, MODIFYING OR DERIVATIVE WORKS OF PLANS CONSTITUTE COPYRIGHT INFRINGEMENT.