

COVAL
H O M E S



Rainier

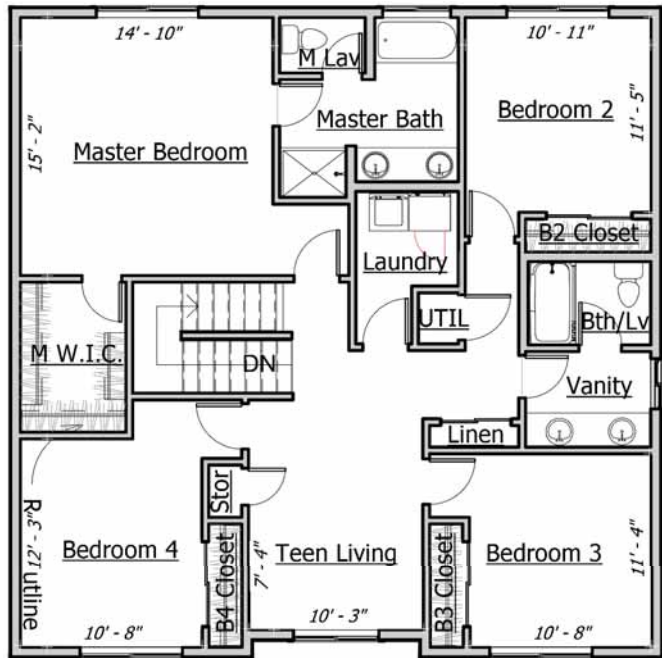
2,809

5

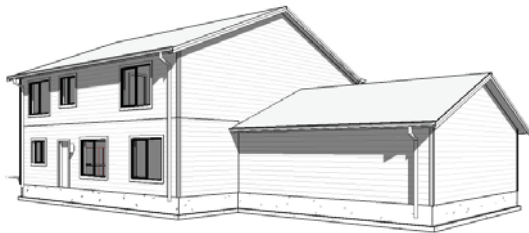
2.75

2

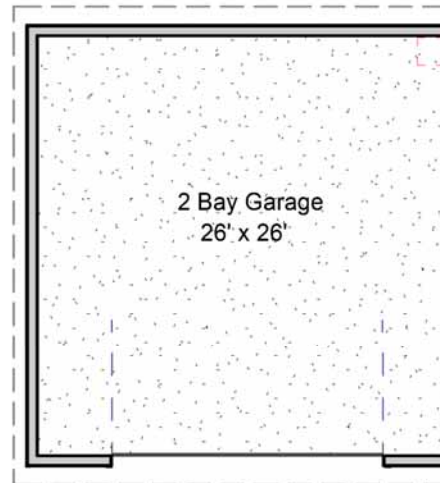
UPPER LEVEL



BACK PERSPECTIVE



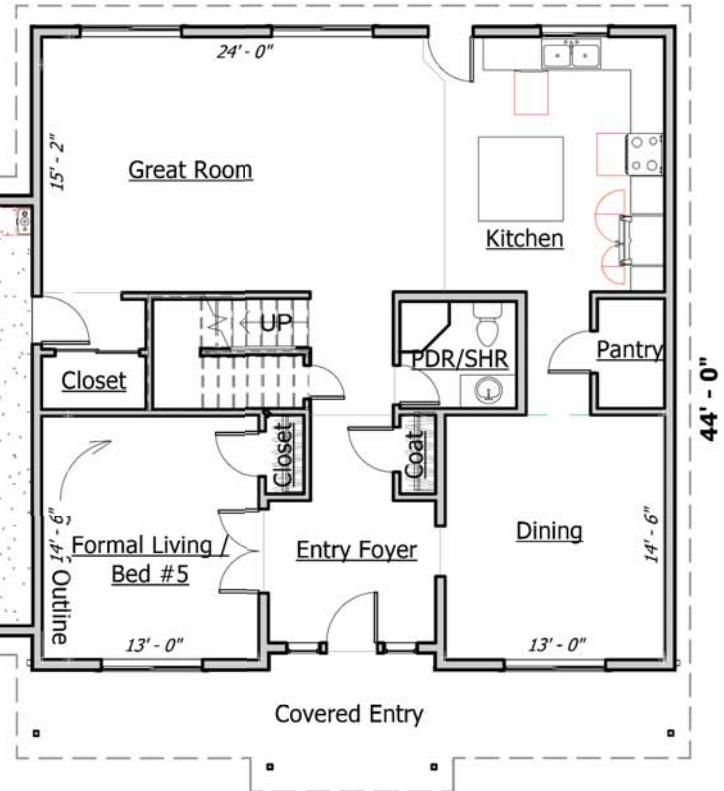
FRONT PERSPECTIVE



Roof Outline

COVAL HOMES

64'-0" BOTTOM LEVEL



LIVING SPACE: 2,809 SQ. FT. BEDROOMS: 5 BATHROOMS: 2.75 STORIES: 2 GARAGES: 2

OPTIONAL FEATURES

- 9' CEILINGS
- GRANITE COUNTERTOPS
- FARMHOUSE SINKS
- FIREPLACE IN GREAT ROOM
- GABLE SHAKES
- LUXURY TILE BATH OPT.
- SOLID WOOD DOORS

Rainier

800-693-0357
 COVALHOMES.COM
 INFO@COVALHOMES.COM

BOTH SIDES CONTAIN ARTIST CONCEPTUAL RENDERINGS. WE RESERVE THE RIGHT TO MODIFY PLANS, DRAWINGS, SPECIFICATIONS AND PRICE WITHOUT NOTICE. COVALHL894QD - COPYRIGHT 2019 COVAL HOMES LLC. COPYING, MODIFYING OR DERIVATIVE WORKS OF PLANS CONSTITUTE COPYRIGHT INFRINGEMENT. REVISION: 1/2019