

COVAL
H O M E S



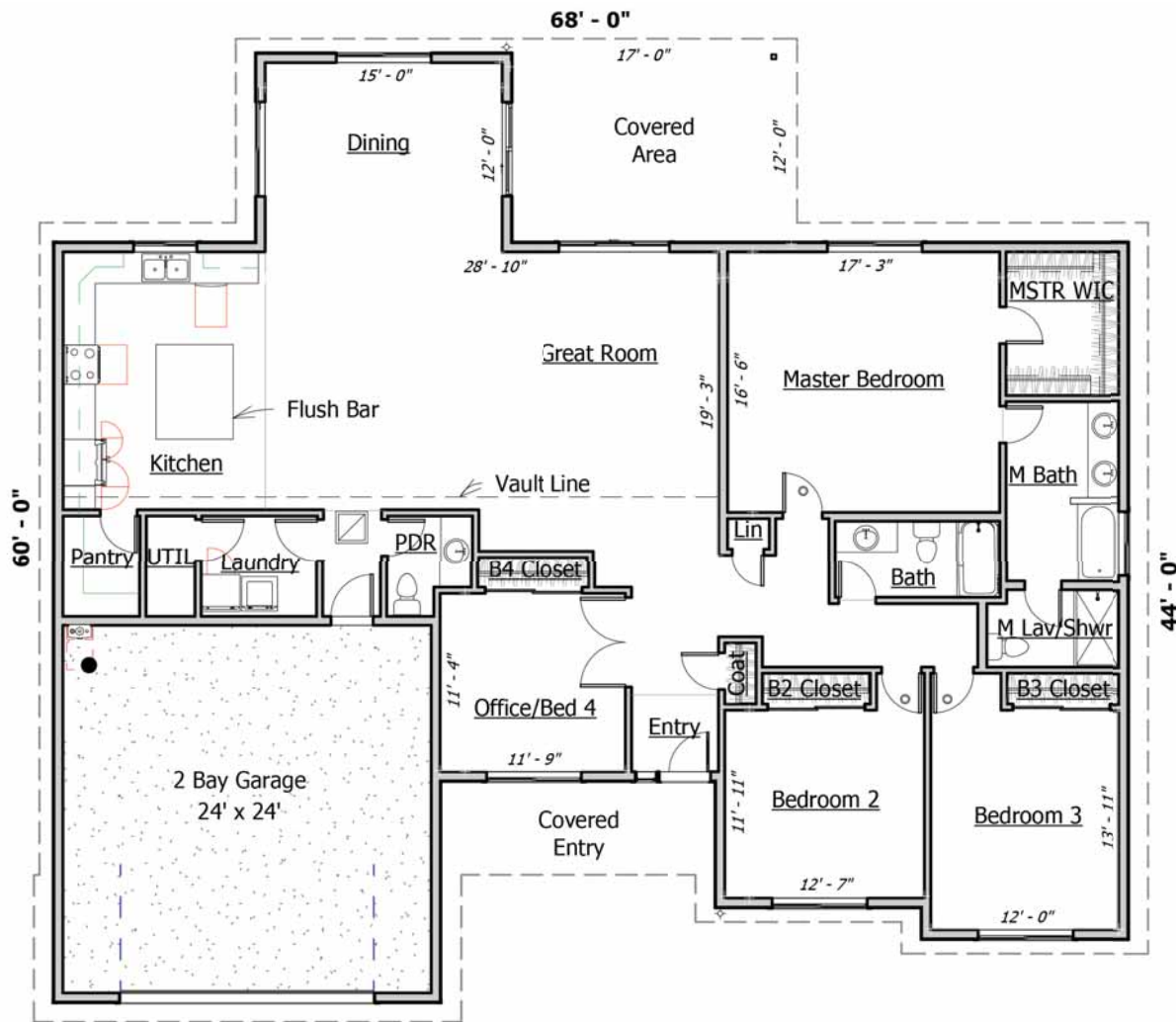
Ponderosa


2,503


4


2.5


2

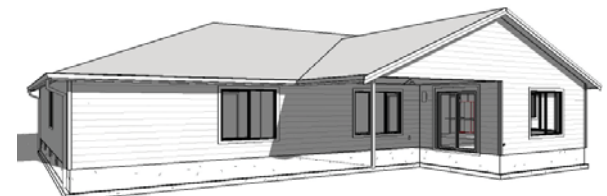


COVAL

H O M E S



FRONT PERSPECTIVE



BACK PERSPECTIVE

LIVING SPACE: 2,503 SQ. FT. BEDROOMS: 4 BATHROOMS: 2.5 STORIES: 1 GARAGES: 2

OPTIONAL FEATURES

- 9' CEILINGS
- GRANITE COUNTERTOPS
- FARMHOUSE SINKS
- FIREPLACE IN GREAT ROOM
- GABLE SHAKES
- LUXURY TILE BATH OPT.
- SOLID WOOD DOORS

Ponderosa

800-693-0357
 COVALHOMES.COM
 INFO@COVALHOMES.COM

BOTH SIDES CONTAIN ARTIST CONCEPTUAL RENDERINGS. WE RESERVE THE RIGHT TO MODIFY PLANS, DRAWINGS, SPECIFICATIONS AND PRICE WITHOUT NOTICE. COVALHL894QD - COPYRIGHT 2019 COVAL HOMES LLC. COPYING, MODIFYING OR DERIVATIVE WORKS OF PLANS CONSTITUTE COPYRIGHT INFRINGEMENT. REVISION: 1/2019