

COVAL^{LLC}
H O M E S



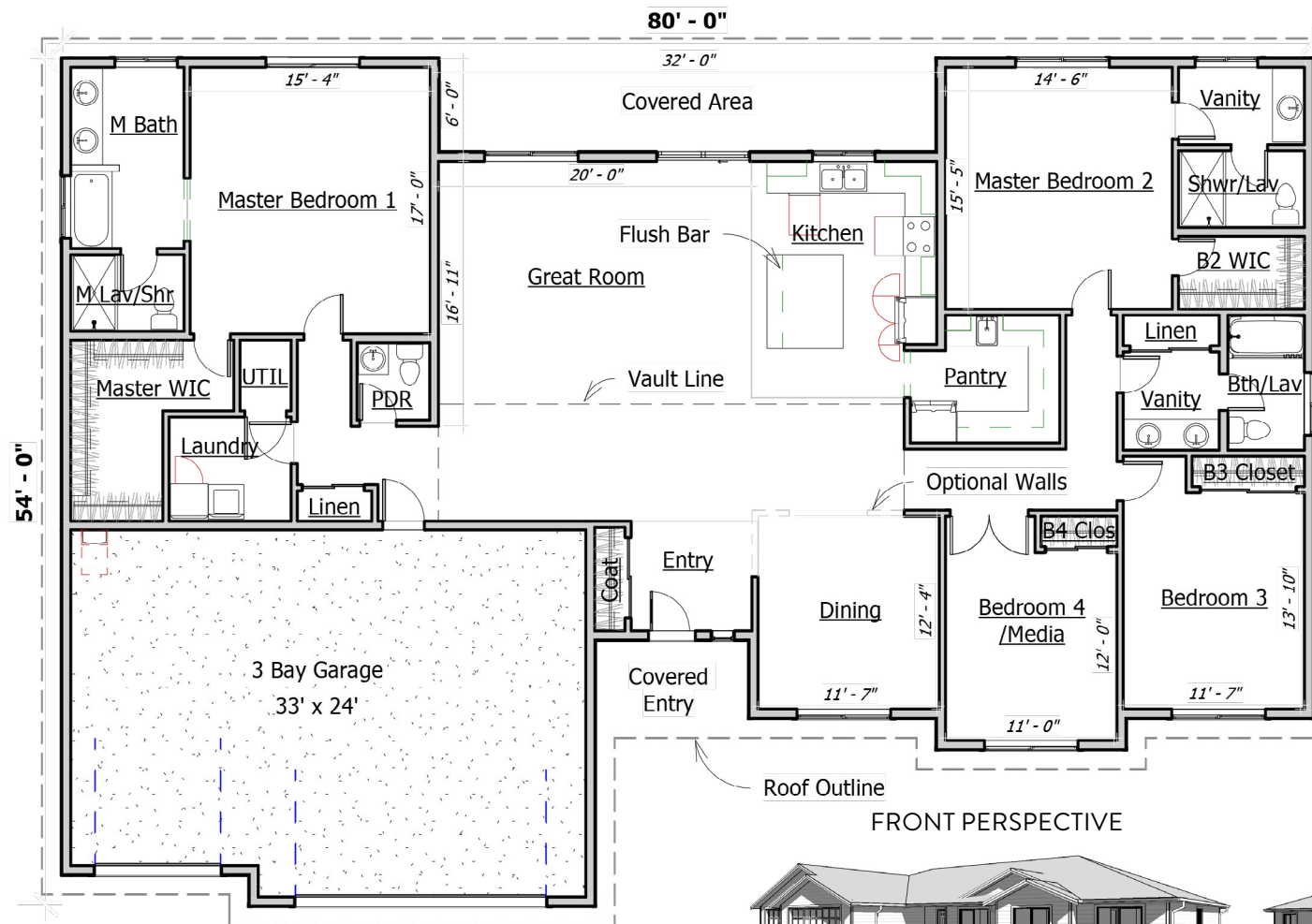
Douglas Duo

↗
2,737

🛏
4

🛁
2.5

🚗
3



COVAL LLC
H O M E S

FRONT PERSPECTIVE



BACK PERSPECTIVE



LIVING SPACE: 2,737 SQ. FT. BEDROOMS: 4 BATHROOMS: 2.5 STORIES: 1 GARAGES: 3

OPTIONAL FEATURES

9' CEILINGS
GRANITE COUNTERTOPS
FARMHOUSE SINKS
FIREPLACE IN GREAT ROOM
GABLE SHAKES
LUXURY TILE BATH OPT.
SOLID WOOD DOORS

Douglas
+ 40

800-693-0357
COVALHOMES.COM
INFO@COVALHOMES.COM

BOTH SIDES CONTAIN ARTIST CONCEPTUAL RENDERINGS. WE RESERVE THE RIGHT TO MODIFY PLANS, DRAWINGS, SPECIFICATIONS AND PRICE WITHOUT NOTICE. COVALHL894QD - COPYRIGHT 2019 COVAL HOMES LLC. COPYING, MODIFYING OR DERIVATIVE WORKS OF PLANS CONSTITUTE COPYRIGHT INFRINGEMENT. REVISION: 1/2019