



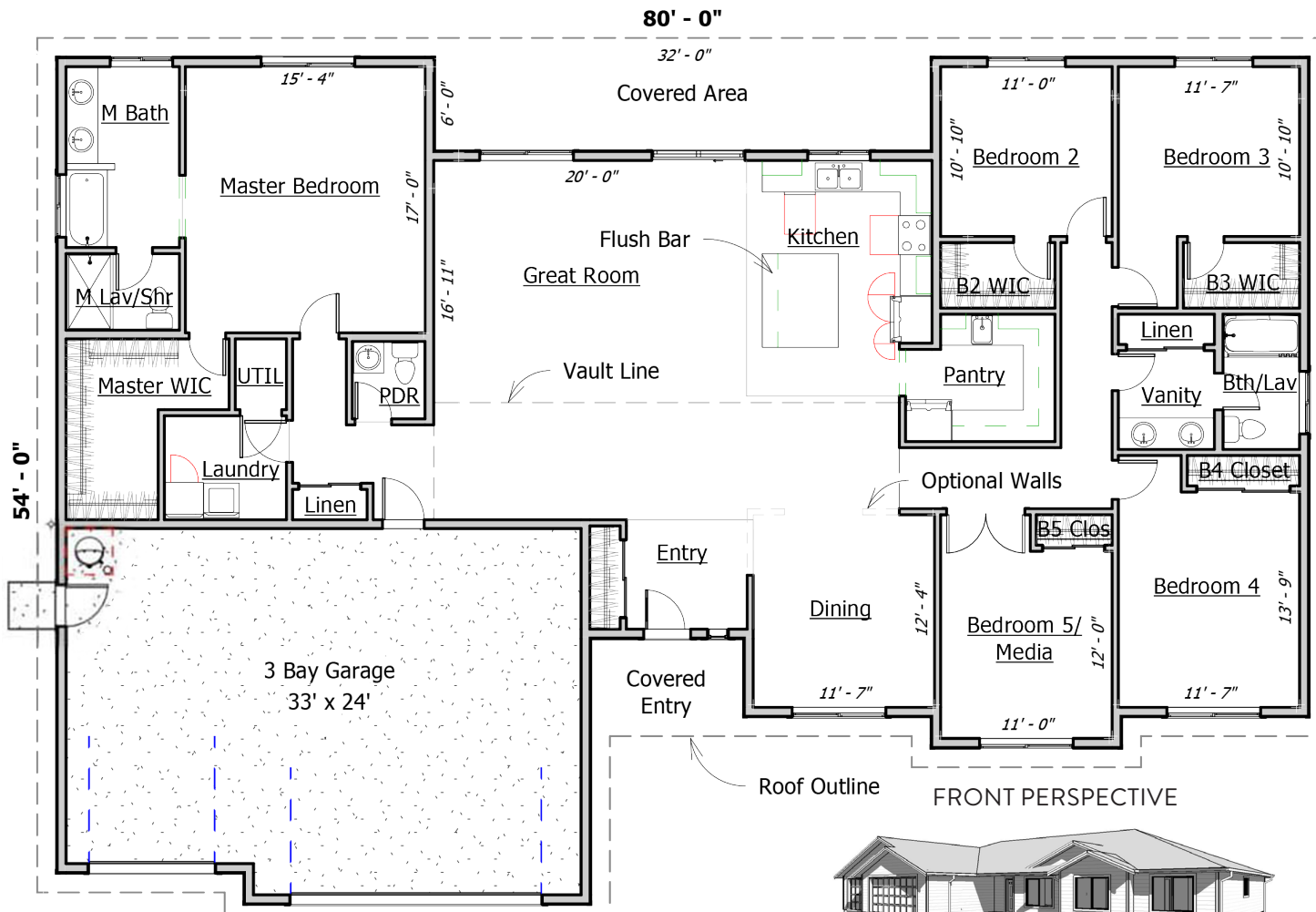
Douglas


2,737


5


2.5


3



COVAL
H O M E S

FRONT PERSPECTIVE



BACK PERSPECTIVE



LIVING SPACE: **2,737 SQ. FT.** BEDROOMS: **5** BATHROOMS: **2.5** STORIES: **1** GARAGES: **3**

OPTIONAL FEATURES

- 9' CEILINGS
- GRANITE COUNTERTOPS
- FARMHOUSE SINKS
- FIREPLACE IN GREAT ROOM
- GABLE SHAKES
- LUXURY TILE BATH OPT.
- SOLID WOOD DOORS

Douglas

800-693-0357
COVALHOMES.COM
INFO@COVALHOMES.COM

BOTH SIDES CONTAIN ARTIST CONCEPTUAL RENDERINGS. WE RESERVE THE RIGHT TO MODIFY PLANS, DRAWINGS, SPECIFICATIONS AND PRICE WITHOUT NOTICE. COVALHL894QD - COPYRIGHT 2026 COVAL HOMES LLC. COPYING, MODIFYING OR DERIVATIVE WORKS OF PLANS CONSTITUTE COPYRIGHT INFRINGEMENT. REVISION: 4/2026