



Rainier

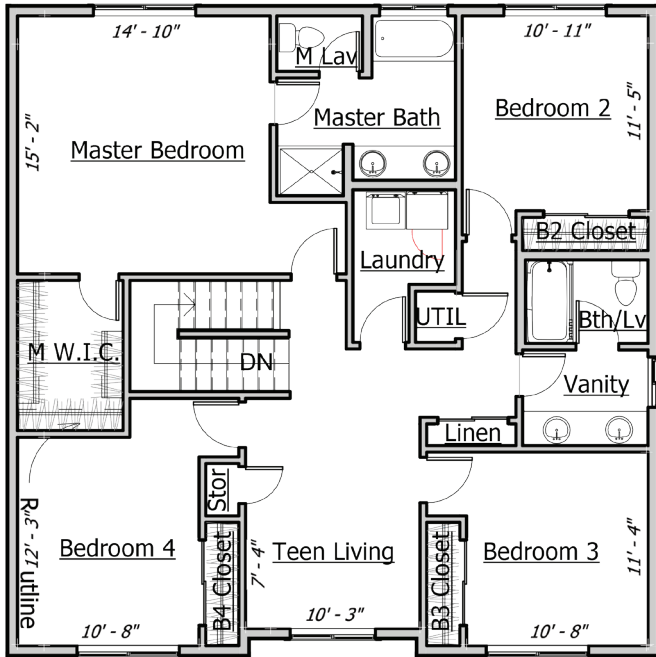
↖ ↗
2,809

🛏️
5

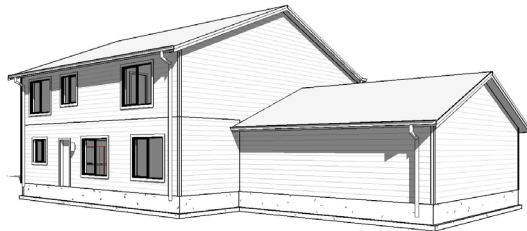
🛁
2.75

🚗
2

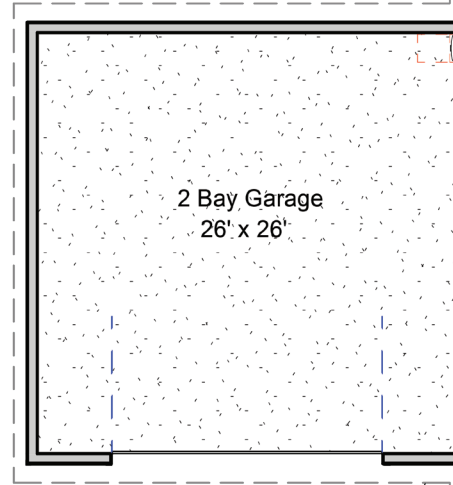
UPPER LEVEL



BACK PERSPECTIVE



FRONT PERSPECTIVE

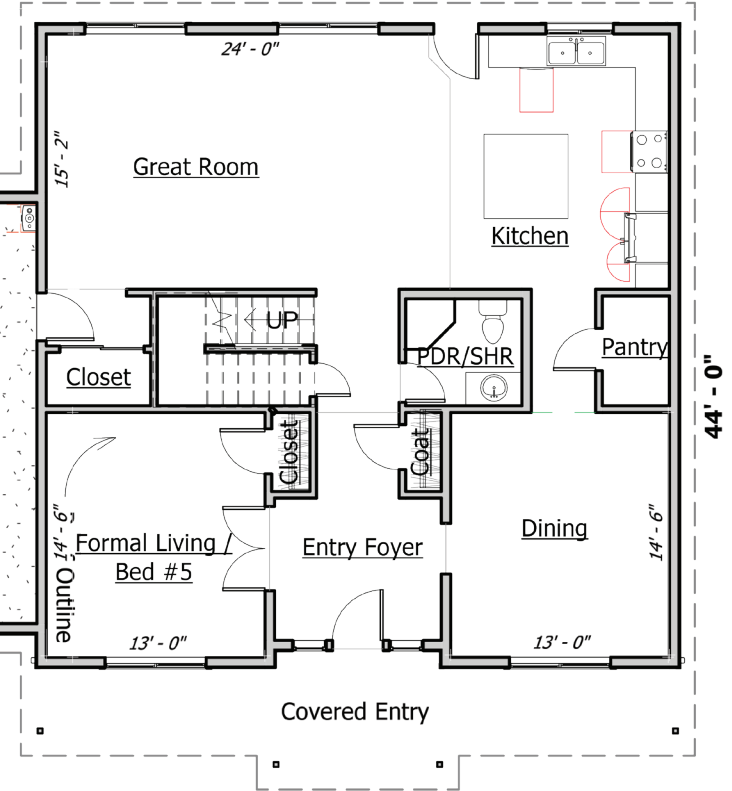


Roof Outline

COVAL

H O M E S

64' - 0" BOTTOM LEVEL



Covered Entry

LIVING SPACE: 2,809 SQ. FT. BEDROOMS: 5 BATHROOMS: 2.75 STORIES: 2 GARAGES: 2

OPTIONAL FEATURES

- 9' CEILINGS
- GRANITE COUNTERTOPS
- FARMHOUSE SINKS
- FIREPLACE IN GREAT ROOM
- GABLE SHAKES
- LUXURY TILE BATH OPT.
- SOLID WOOD DOORS

Rainier

800-693-0357
 COVALHOMES.COM
 INFO@COVALHOMES.COM

BOTH SIDES CONTAIN ARTIST CONCEPTUAL RENDERINGS. WE RESERVE THE RIGHT TO MODIFY PLANS, DRAWINGS, SPECIFICATIONS AND PRICE WITHOUT NOTICE. COVALHL894QD - COPYRIGHT 2019 COVAL HOMES LLC. COPYING, MODIFYING OR DERIVATIVE WORKS OF PLANS CONSTITUTE COPYRIGHT INFRINGEMENT. REVISION: 1/2019